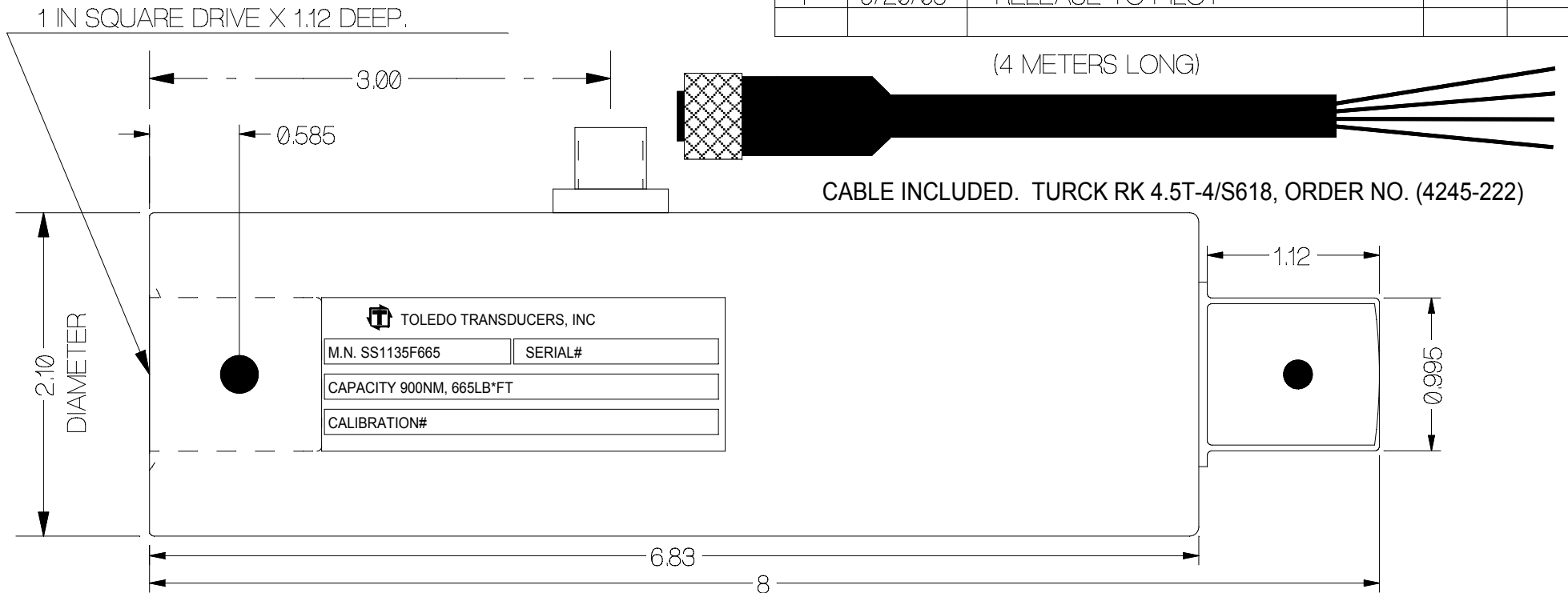


| REV | DATE    | DESCRIPTION      | ECO | SIGN |
|-----|---------|------------------|-----|------|
| 1   | 9/20/08 | RELEASE TO PILOT |     |      |

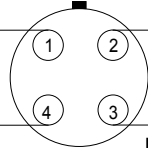


**SPECIFICATIONS:**

|                                   |  |
|-----------------------------------|--|
| RATED CAPACITY                    | 900 NM, 665 Lb-FT                          |
| RATED OUTPUT                      | 4 mV/V typical                             |
| COMBINED ERROR                    | ± 0.25% F.S.                               |
| NON-REPEATABILITY                 | 0.01 %                                     |
| ZERO BALANCE                      | ± 10 %                                     |
| TEMPERATURE RANGE, COMPENSATED    | +60 TO 160° F                              |
| TEMPERATURE EFFECT, OUTPUT        | 0.001 % of Load / ° F                      |
| TEMPERATURE EFFECT, ZERO BALANCE  | Not rated                                  |
| INPUT IMPEDANCE, OUTPUT IMPEDANCE | 350 OHMS, typical                          |
| EXCITATION VOLTAGE (typical)      | 10 VDC or VAC rms                          |
| EXCITATION VOLTAGE, MAXIMUM       | 15 VDC or VAC rms                          |
| INSULATION RESISTANCE             | 5,000 MEG OHMS @ 50 VDC                    |
| MAXIMUM LOAD, SAFE                | 110 % F.S.                                 |
| MAXIMUM LOAD, ULTIMATE            | 125 % F.S.                                 |
| CONSTRUCTION                      | STAINLESS STEEL COVER, ALLOY STEEL ELEMENT |

| PIN NO. | WIRE COLOR CODE: | CABLE COLOR |
|---------|------------------|-------------|
| 1       | +EXCITATION      | BROWN       |
| 2       | -SIGNAL          | WHITE       |
| 3       | -EXCITATION      | BLUE        |
| 4       | + SIGNAL         | BLACK       |

12mm EUROSTYLE  
(REAR RECEPTACLE SIDE)

|                               |   |                             |
|-------------------------------|---|-----------------------------|
| GREEN + EXC.<br>(CABLE BROWN) |  | RED - SIG.<br>(CABLE WHITE) |
| (CABLE BLACK)                 |   | (CABLE BLUE)                |
| WHITE + SIG.                  |   | BLACK - EXC.                |

**TOLERANCES UNLESS OTHERWISE SPECIFIED:**

.XXX = ± 0.005  
.XX = ± 0.015  
.X = ± 0.025

SCALE: FULL



TOLEDO  
TRANSDUCERS,  
INC.

Designed By: Mettert

Date: 9/20/08

Title / Description:

900 NM, 665 LB-FT  
TORQUE TRANSDUCER

Part No.

SS1135F665FT-LB

Drawn By:

Date:

Approved By:

Date:

Dwg. Size:

Dwg. Type:

Page 1 of 1

File Name

16544SP

Doc. No.

16544