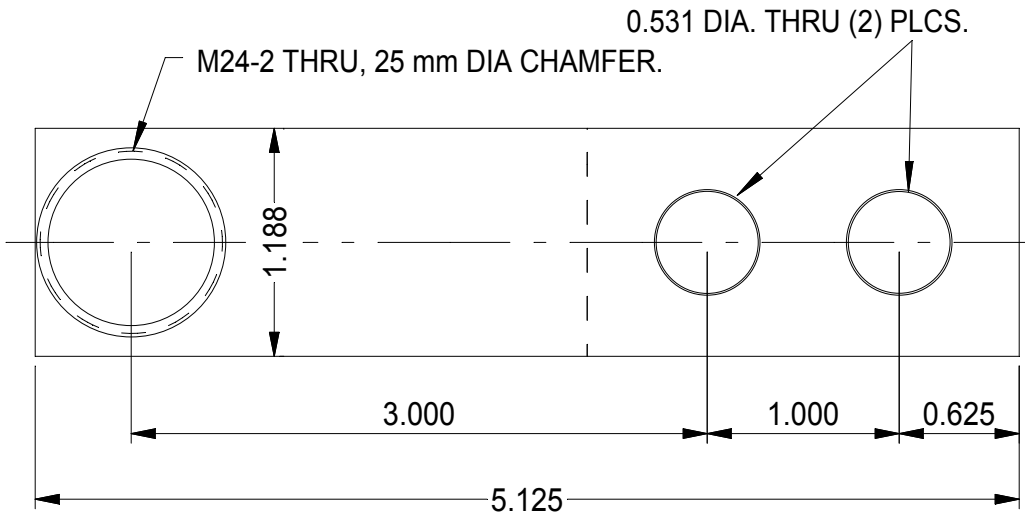
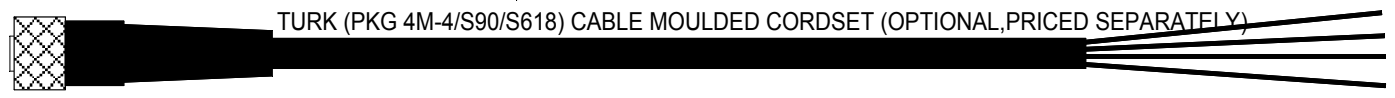
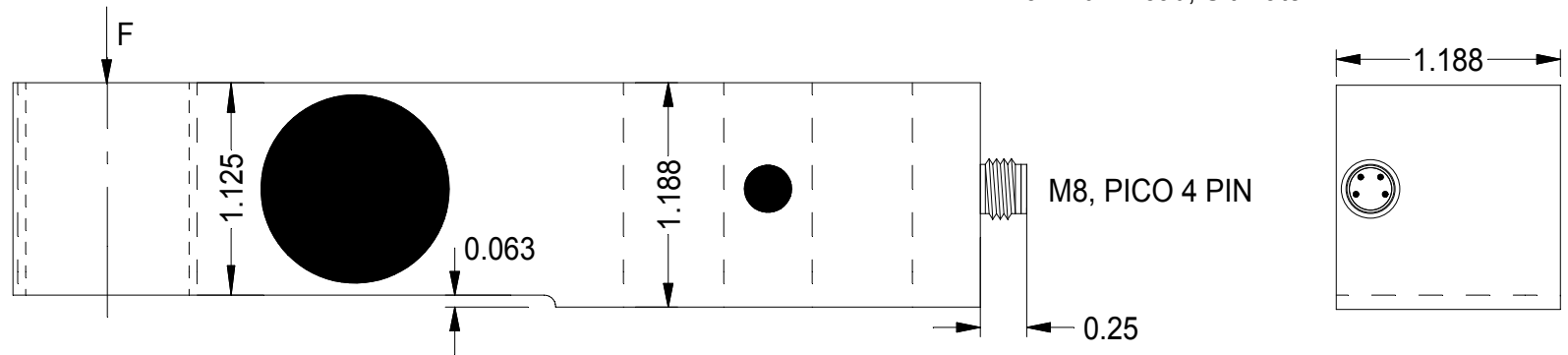


REV	DATE	DESCRIPTION	ECO	SIGN
A		RELEASE TO PRODUCTION		




Rated Capacity	1,000 LBS
Rate Output, 0.25%	3 mV/V
Combined Error	<0.03 %*
Non-repeatability	0.01 %
Creep, 30 minutes	0.05 %
Zero Balance	± 10 %
Temperature Range, Compensated	+ 14 to + 104° F
Temperature Effect, Output	0.05 % of load / 100° F
Temperature Effect, Zero Balance	0.15% / 100° F
Input Impedance	410 Ohms ± 20 %
Output Impedance	350 Ohms ± 1 %
Insulation Resistance	5,000 Megohms at 50 VDC
Maximum Load, Safe	150 %
Maximum Load, Ultimate	200 %



WIRE COLOR CODE:	PIN NO.
+EXCITATION BROWN	1
+SIGNAL WHITE	2
- SIG BLUE	3
- EXCITATION BLACK	4

\* Combined effects of Non-linearity and Hysteresis: The maximum deviation from the straight line, drawn between the original no-load and Rated capacity, expressed as a percent of Rated Output and measured on increasing and decreasing load.

 TOLEDO TRANSDUCERS, INC.	Designed By:	Mettert	Date:	7/8/09	Title / Description:		Part No.	SS6100-1KLB-M24x2
	Drawn By:		Date:				SS6100-1KLB-M24x2 BEAM LOAD CELL	
	Approved By:		Date:		Dwg. Size:	Dwg. Type:	Page 1 of 1	Doc. No.