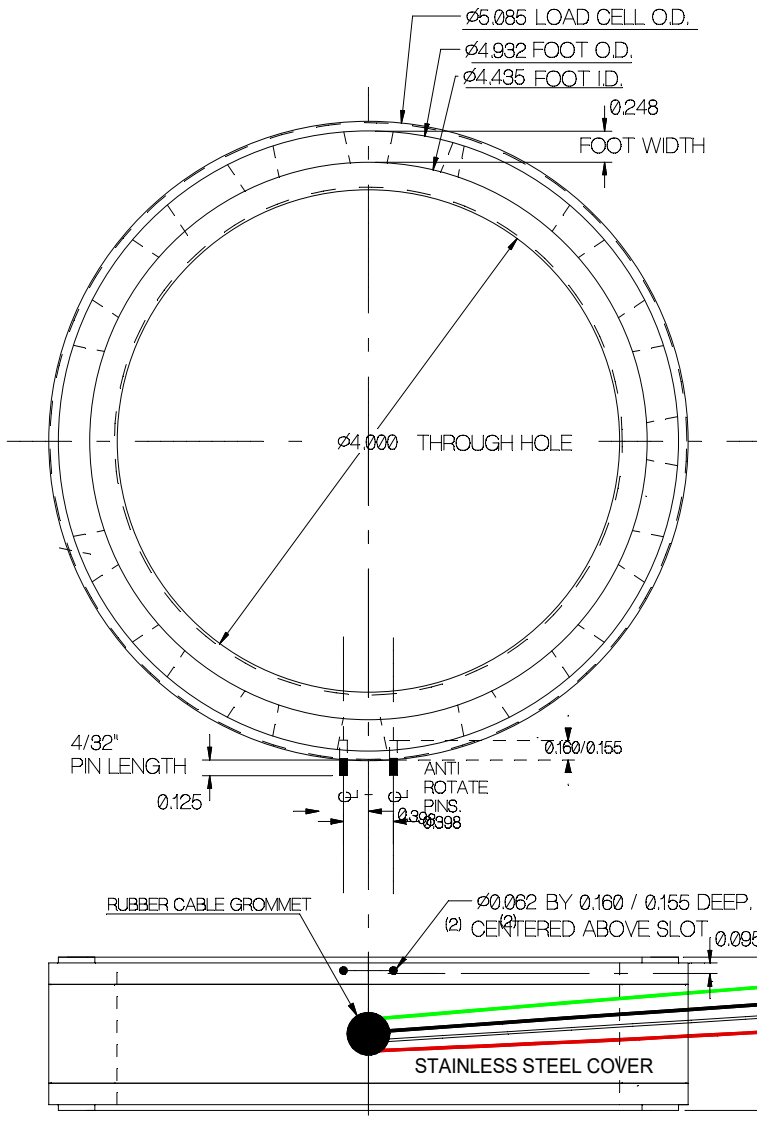


REV	DATE	DESCRIPTION	ECO	SIGN
1	7/23/14	PILOT	1353	MJH



SPECIFICATIONS:

Rated Capacity	100K LBS
Rated Output, typical, CALIBRATED AT 66KLB	1 mV/V
Combined error	0.5 % F.S.
Non-repeatability	0.05 % F.S.
Zero Balance	1 % R.O.
Temperature Range, Compensated	50 F to 120 F
Temperature Effect, Output	0.0008 % of load / ° F
Temperature Effects, Zero Balance	NOT RATED
Bridge Impedance, Typical	350 ohms
Excitation Voltage, Typical	10 VDC or VAC rms
Excitation Voltage, Maximum	15 VDC or VAC rms
Insulation Resistance	> 5,000 megohms at 50 VDC
Overload, Safe	300 %
Overload, Ultimate	400 %
Deflection at Rated Capacity, Approximate	0.0025 inch
Construction	Tool steel

Cable color code:

Green	+ Excitation
Black	- Excitation
White	+ Signal
Red	- Signal

TOLERANCES UNLESS OTHERWISE SPECIFIED:  
 XXX = ± 0.005  
 XX = ± 0.015  
 X = ± 0.025  
 FINISH: 32 MICRINCH OR LESS  
 MAT'L: A2 TOOL STEEL  
 HARDNESS: Rc 40-46

SCALE: FULL



Designed By: METTERT  
 Date: 11/18/2020  
 Drawn By:  
 Date:  
 Approved By:  
 Date:

Title / Description:  
 SS1809-100KLB, 66KLB, 48KLB  
 LOAD CELL ELEMENT  
 Dwg Size: B  
 Dwg Type: SPEC  
 Page 1 of 1

Part No. SS1809  
 File Name 18306  
 Doc. No. 18306