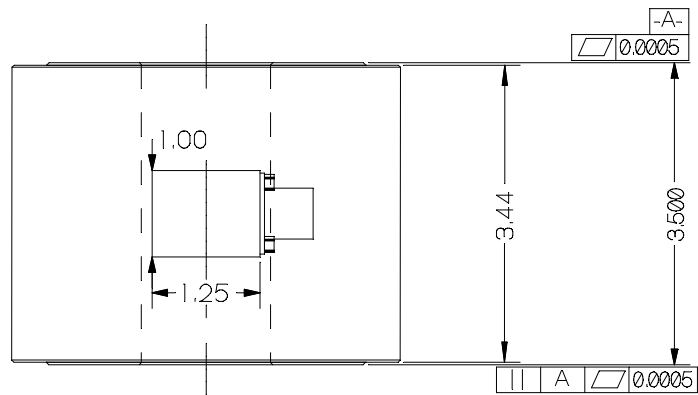


REV	DATE	DESCRIPTION	ECO	SIGN
1	7/8/19	RELEASE TO PILOT		BKM

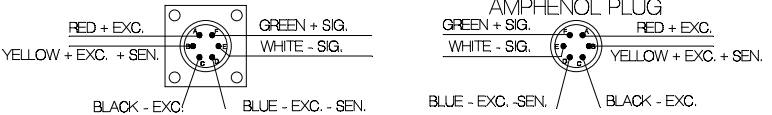
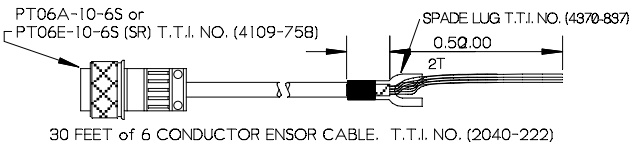
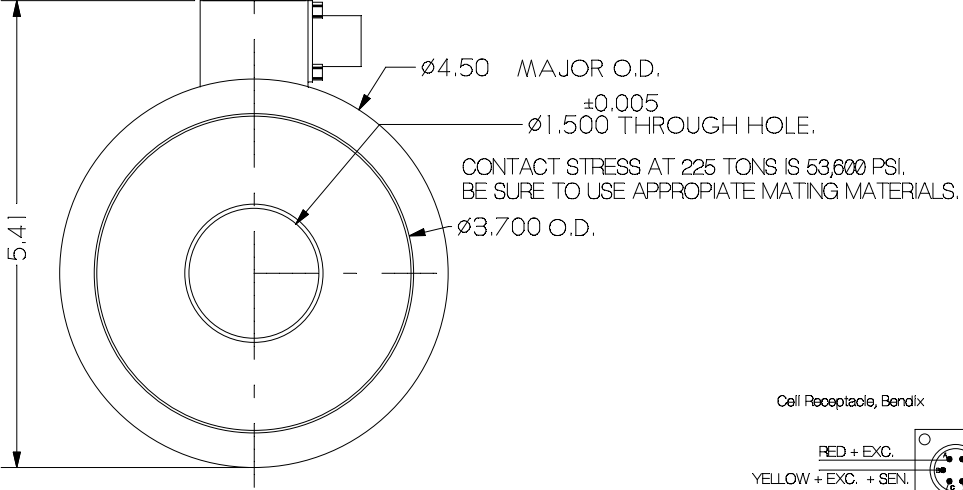


SPECIFICATIONS:

Rated Capacity, (COMPRESSION)	225 TONS
Rated Output, typical	2 mV/V
Combined error	0.50 % F.S.
Non-repeatability	0.1 % F.S.
Zero Balance	1 % R.O.
Temperature Range, Compensated	50 F to 160 F
Temperature Effect, Output	0.0008 % of load / °F
Temperature Effects, Zero Balance	0.005% / °F
Bridge Impedance, Typical	350 ohms
Excitation Voltage, Typical	10 VDC or VAC rms
Excitation Voltage, Maximum	15 VDC or VAC rms
Insulation Resistance	> 5,000 megohms at 50 VDC
Overload, Safe	150 % over capacity
Deflection at Rated Capacity, Approximate	0.006 inch
Construction	ALLOY STEEL

Cable color code: PIN DESIGNATION

RED		A	+ EXCITATION
YELLOW		B	+ EXCITATION (sense)
BLACK		C	- EXCITATION
BLUE		D	- EXCITATION (sense)
WHITE		E	- SIGNAL
GREEN		F	+ SIGNAL



	Designed By: Mettert	Date: 7/8/19	Title / Description: SS1777-225 TONS DOUGHNUT LOAD CELL SPECIFICATIONS	Part No. SS1777-225T
	Drawn By:	Date:		File Name 18094
	Approved By:	Date:	Dwg Size: A Dwg. Type: SPEC	Doc. No. 18094