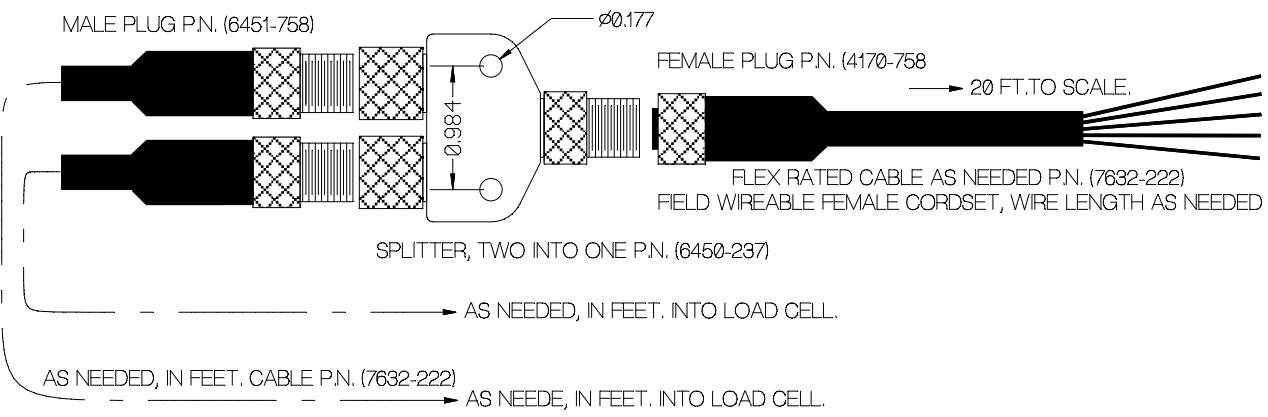
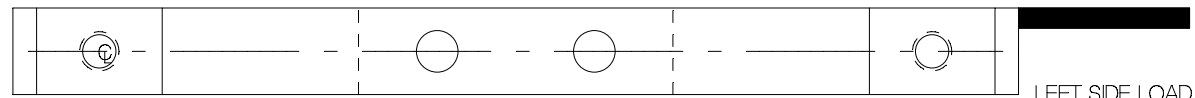


REV	DATE	DESCRIPTION	ECO	SIGN
1	2/29/2012	RELEASE TO QUOTE		BKM
2	7/3/2012	LOAD CELL SPECS WERE 3/4" WIDE.		BKM

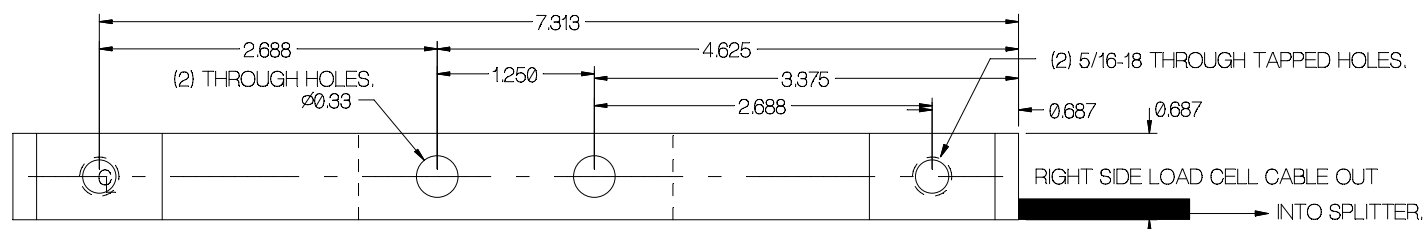


SPECIFICATIONS:

Rated Capacity	1,000 pounds
Rated Output, (Matched ± 0.002 mV/V)	2 mV/V
Combined error	± 0.05 % F.S.
Non-repeatability	0.03 % F.S.
Zero Balance	10 % R.O.
Temperature Range, Compensated	50° F to 150° F
Temperature Effect, Output	0.0008 % of load / ° F
Temperature Effects, Zero Balance	0.0025 % / R.O. / ° F
Temperature Range, Useable	-65° F to 200° F
Bridge Impedance, Typical	500 ohms
Excitation Voltage, Typical	10 VDC or VAC rms
Excitation Voltage, Maximum	15 VDC or VAC rms
Insulation Resistance	> 5,000 megohms at 50 VDC
Overload, Safe	2,000 pounds
Overload, Ultimate	3,000 pounds
Construction	Stainless Steel



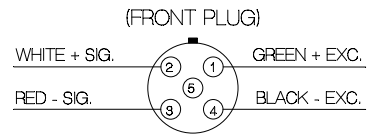
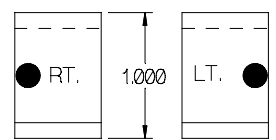
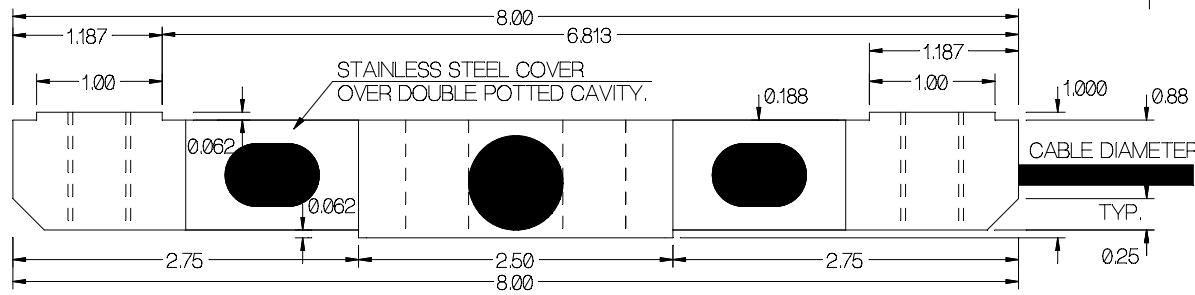
LEFT SIDE LOAD CELL CABLE OUT



FEMALE SPLITTER OR FEMALE PLUG

WIRE COLOR CODE: T.T.I. STD. PIN NO.

+EXCITATION	GREEN	1
+SIGNAL	WHITE	2
-SIG	RED	3
-EXCITATION	BLACK	4



NOTE:
TWO LOAD CELLS REQUIRED PER ASSEMBLY.
SPLITTER COMBINES TWO LOAD CELLS INTO ONE OUTPUT.
THE SCALE DISPLAYS THE LOAD FROM THE COMBINED LOAD CELLS.

TOLERANCES UNLESS OTHERWISE SPECIFIED:

XXX = ± 0.005	SCALE: FULL
XX = ± 0.015	
X = ± 0.025	
FINISH: 64 to 32 MICRO INCH	
MAT'L: 17-4 PH STAINLESS STEEL	
HARDNESS: H900, Rc 40-46	



Designed By:	METTERT	Date:	2/29/2012	Title / Description:	DOUBLE ENDED SHEAR BEAM LOAD CELL SPECIFICATIONS
Drawn By:		Date:		Dwg Size:	B
Approved By:		Date:		Dwg. Type:	SPEC

Part No.	SS1639-1KLB
File Name	17170
Doc. No.	17170