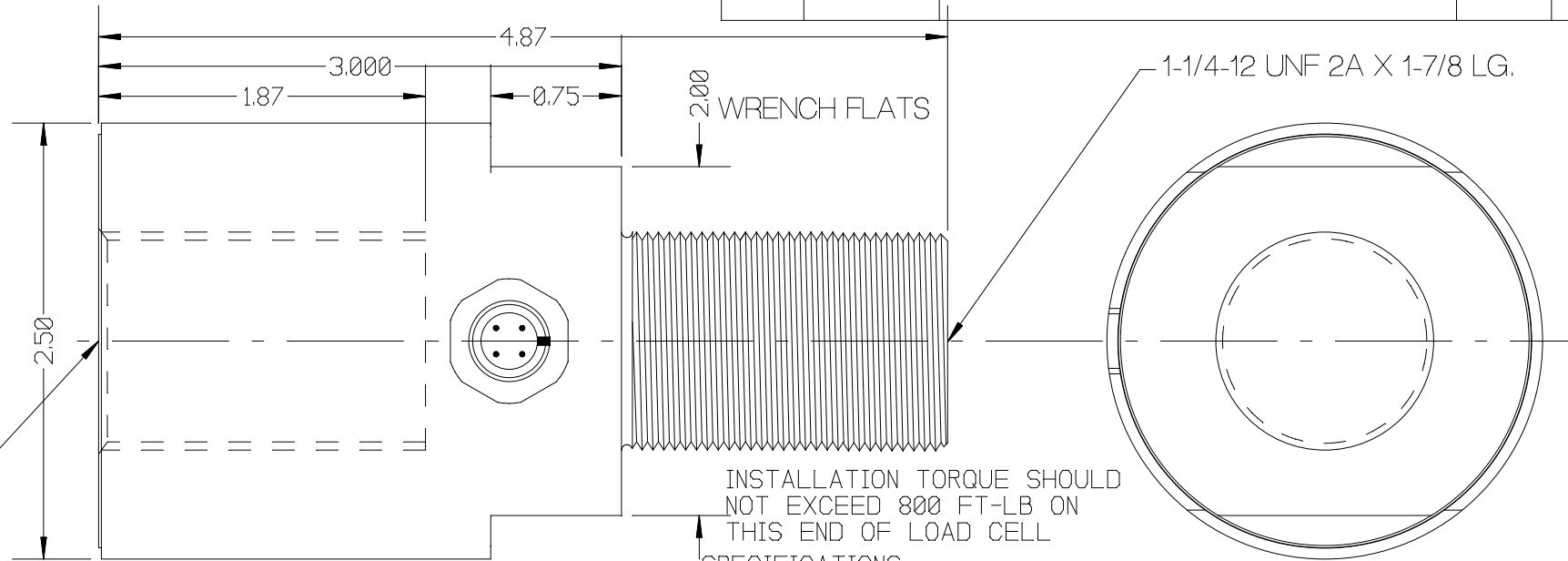


REV	DATE	DESCRIPTION	ECO	SIGN
1				

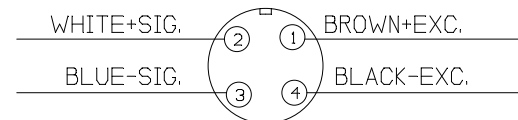


INSTALLATION TORQUE SHOULD NOT EXCEED 800 FT-LB ON THIS END OF LOAD CELL

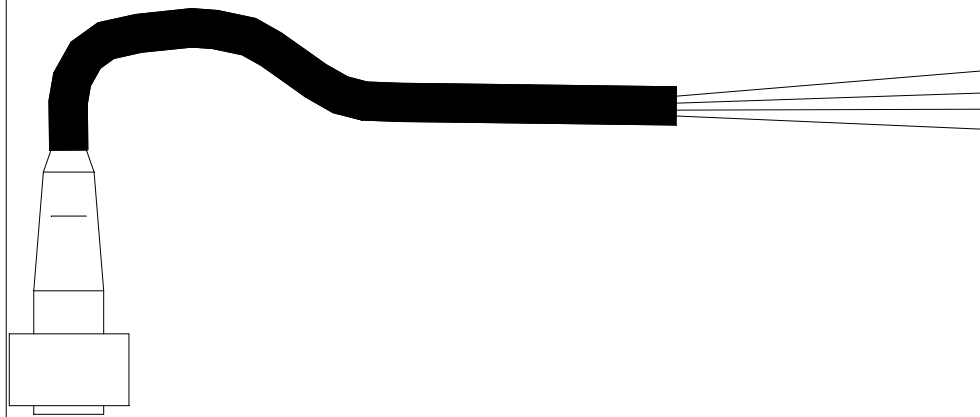
SPECIFICATIONS:

RATED CAPACITY	10,000 POUNDS
RATED OUTPUT	2 mV/V typical
COMBINED ERROR	0.25 %
NON-REPEATABILITY	0.05 %
ZERO BALANCE	± 1 %
TEMPERATURE RANGE, COMPENSATED	+14 TO 104° F
TEMPERATURE EFFECT, OUTPUT	0.014 % / ° F
TEMPERATURE EFFECT, ZERO BALANCE	0.05 % / ° F
INPUT / OUTPUT IMPEDANCE	700 OHMS, typical
EXCITATION VOLTAGE (typical)	10 VDC or VAC rms
EXCITATION VOLTAGE, MAXIMUM	15 VDC or VAC rms
INSULATION RESISTANCE	5,000 MEG OHMS @ 50 VDC
MAXIMUM LOAD, SAFE	150 % F.S.
MAXIMUM LOAD, ULTIMATE	300 % F.S.

(RECEPTACLE FRONT SIDE)



TURCK



TOLERANCES UNLESS OTHERWISE SPECIFIED:

XXX = ± 0.005

XX = ± 0.015

X = ± 0.025

SCALE: FULL

FINISH: FINE BRUSHED FINISH, O.D. NO MARKS

MAT'L: ALLOY STEEL / STAINLESS STEEL



TOLEDO
TRANSDUCERS,
INC.

Designed By: Mettert

Date: 8/7/02

Title / Description:
ROD END LOAD CELL
SPECIFICATIONS

Part No. SS1461-10K

Drawn By:

Date:

File Name 13843SP.FCD

Approved By:

Date:

Dwg. Size: A
Dwg. Type: SPEC

Page 1 of 1

Doc. No. 13843