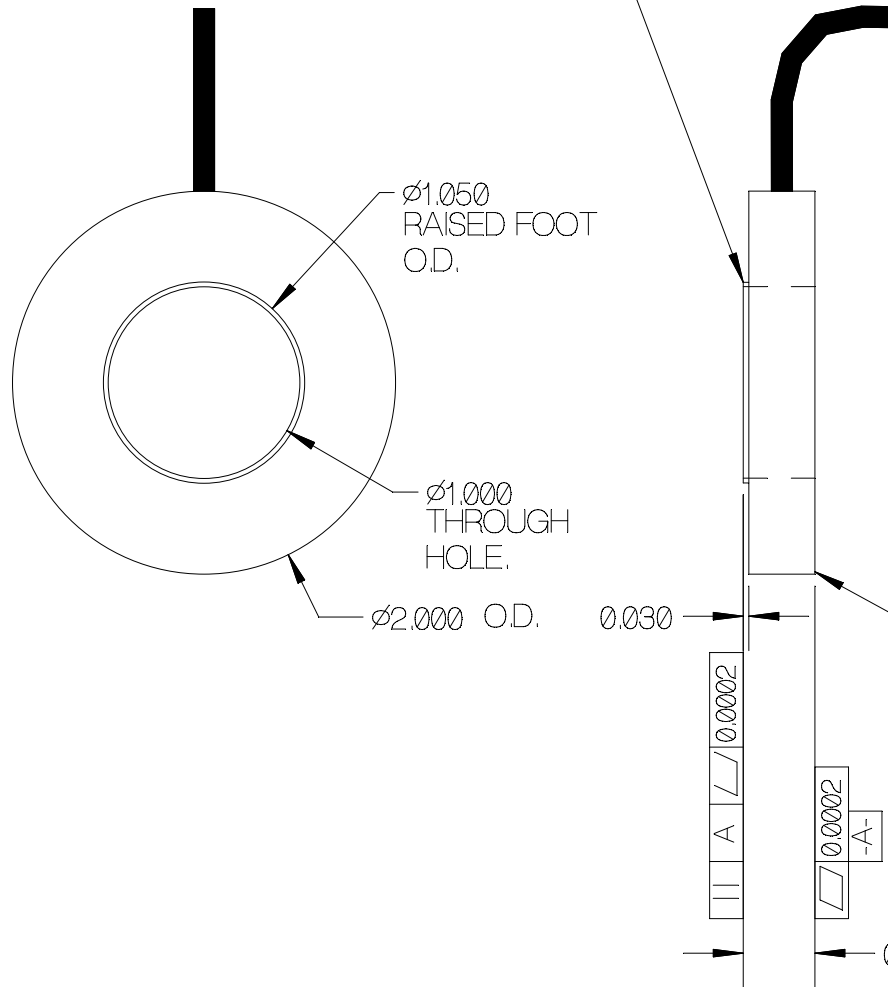


REV	DATE	DESCRIPTION	ECO	SIGN

TOP FORCE RESTS ON RAISED FOOT

Ø.110 DIA TEFLON SENSOR CABLE, 10 FT LONG.



SPECIFICATIONS:

RATED CAPACITY	100 POUNDS
RATED OUTPUT	2 mV/V typical
COMBINED ERROR	<=1 %
NON-REPEATABILITY	0.05 %
ZERO BALANCE	± 1 %
TEMPERATURE RANGE, COMPENSATED	+14 TO 104° F
TEMPERATURE EFFECT, OUTPUT	0.014 % / ° F
TEMPERATURE EFFECT, ZERO BALANCE	0.05 % / ° F
INPUT IMPEDANCE	350 OHMS, typical
EXCITATION VOLTAGE (typical)	10 VDC or VAC rms
EXCITATION VOLTAGE, MAXIMUM	15 VDC or VAC rms
INSULATION RESISTANCE	5,000 MEG OHMS @ 50 VDC
MAXIMUM LOAD, SAFE	300 % F.S.
MAXIMUM LOAD, ULTIMATE	600 % F.S.

BOTTOM O.D. MUST BE FULLY SUPPORTED

WIRE COLOR CODE:

+ EXCITATION	GREEN or YELLOW
- EXCITATION	BLACK
+ SIGNAL	WHITE
- SIGNAL	RED
SHIELD	FLOATS AT CELL

TOLERANCES UNLESS OTHERWISE SPECIFIED:

XXX = ± 0.005  
XX = ± 0.015  
X = ± 0.025

SCALE: FULL

FINISH: NO MACHINE MARKS

MAT'L: ALUMINUM

HARDNESS:



TOLEDO  
TRANSDUCERS,  
INC.

Designed By: Mettert

Date: 4/26/04

Drawn By:

Date:

Approved By:

Date:

Title / Description:

100 POUND DOUGHNUT  
LOAD CELL SPECS.

Dwg. Size:

Dwg. Type:

A

SPECS

Page 1 of 1

Part No.

SS1445-100LB

File Name

13927SP.FCD

Doc. No.

13927