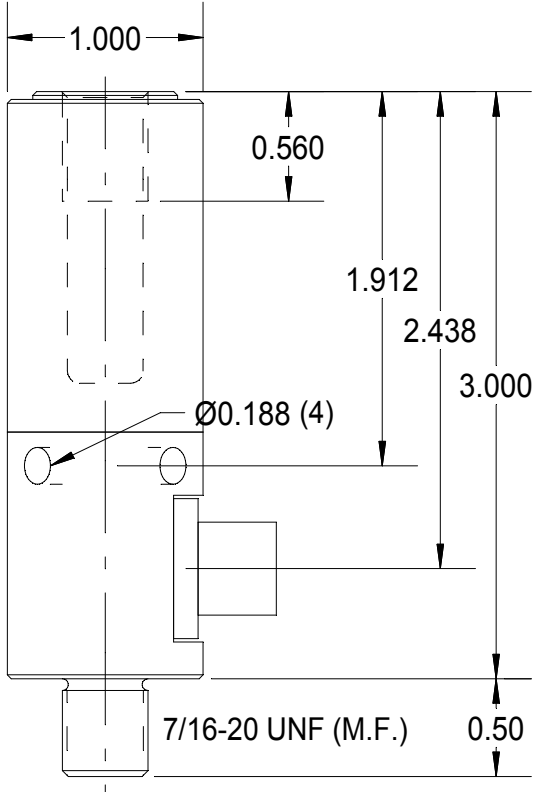


REV	DATE	DESCRIPTION	ECO	SIGN
1	2/2/05	RELEASE TO PILOT		BKM



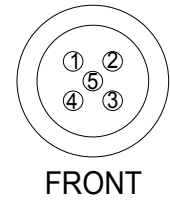
SPECIFICATIONS:

RATED CAPACITY	5,000 N
RATED OUTPUT, matched	2.00 ± 0.01 mV/V
COMBINED ERROR	± 0.25 %
NON-REPEATABILITY	< 0.05 %
ZERO BALANCE	± 1 %
TEMPERATURE RANGE, COMPENSATED	+60 TO 160° F
TEMPERATURE EFFECT, OUTPUT	0.0005 % of Load / ° F
TEMPERATURE EFFECT, ZERO BALANCE	Not rated
INPUT IMPEDANCE	1,000 typical
OUTPUT IMPEDANCE	1,000 OHMS, typical
EXCITATION VOLTAGE (typical)	10 VDC or VAC rms
EXCITATION VOLTAGE, MAXIMUM	15 VDC or VAC rms
INSULATION RESISTANCE	5,000 MEG OHMS @ 50 VDC
MAXIMUM LOAD, SAFE	300 % F.S.
MAXIMUM LOAD, ULTIMATE	500 % F.S.
DEFLECTION AT RATED CAPACITY, APPROXIMATE	0.001 in.
CONSTRUCTION	STAINLESS STEEL COVER, TOOL STEEL ELEMENT

USE FRACTIONAL FIXED HEAD-PIN STYLE SPANNER WRENCH.
McMASTER-CARR NO. 5475A11.

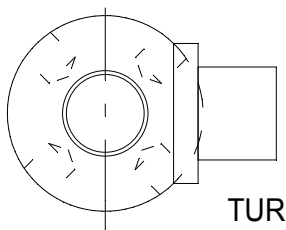
PIN COLOR CODE:

- 1 + EXC.
- 2 - SIG.
- 3 - EXC.
- 4 + SIG.



WIRE COLOR CODE:		T.T.I. STD.	PIN NO.
+EXCITATION	BROWN	GREEN	1
-SIGNAL	WHITE	RED	2
-EXCITATION	BLUE	BLACK	3
+ SIGNAL	BLACK	WHITE	4

SHLD. < 1 OHM to ELEMENT



TOLERANCES UNLESS OTHERWISE SPECIFIED: .XXX = ± 0.005 .XX = ± 0.015 .X = ± 0.025 FINISH: 32 MICRO INCH OR LESS	 TOLEDO TRANSDUCERS, INC.	Designed By: Mettert	Date: 1/2/02	Title / Description: SS1395-5kN INSERTION LOAD CELL SPECIFICATIONS TOX P.N. ZLC0005-US		Part No. SS1395-5KN
		Drawn By:	Date:	Dwg. Size: A	Dwg. Type: SPEC	Page 1 of 1
		Approved By:	Date:			Doc. No.