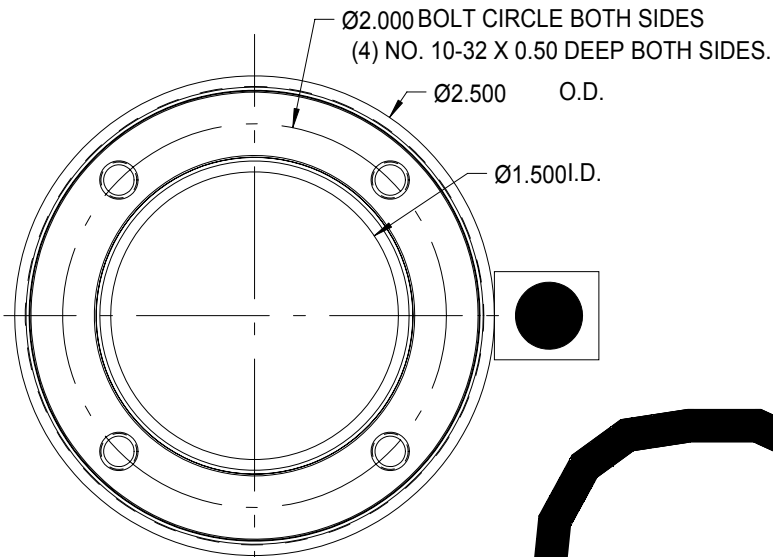


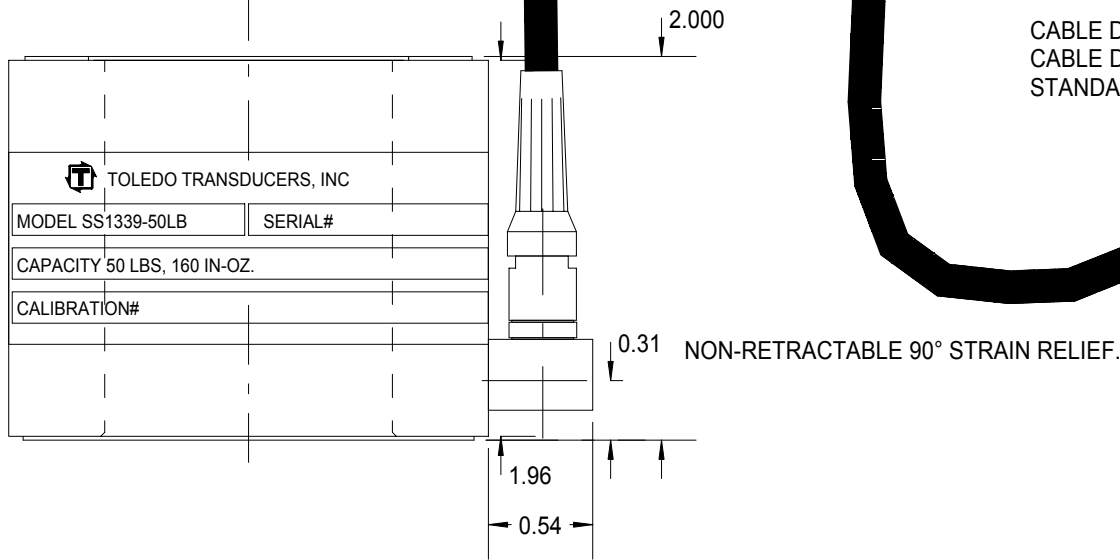
| REV | DATE | DESCRIPTION | ECO | SIGN |
|-----|----------|------------------|-----|------|
| 1 | 12/14/00 | RELEASE TO PILOT | 997 | RAB |



SPECIFICATIONS:

| | |
|--|-------------------------------|
| RATED AXIAL FORCE CAPACITY | 50 POUNDS |
| RATED TORQUE CAPACITY | 160 IN-OZ |
| RATED OUTPUT | 2 mV/V typical |
| Uncertainty Calculated according to ASTM E74 | ± 0.01 % |
| NON-REPEATABILITY | < 0.01 % |
| ZERO BALANCE | ± 10 % |
| TEMPERATURE RANGE, COMPENSATED | +60 TO 160° F |
| TEMPERATURE EFFECT, OUTPUT | 0.05 % of Load / 100° F |
| TEMPERATURE EFFECT, ZERO BALANCE | 0.1 of Rated Capacity / 100°F |
| INPUT IMPEDANCE | 400 OHMS, typical |
| OUTPUT IMPEDANCE | 350 OHMS, typical |
| EXCITATION VOLTAGE (typical) | 10 VDC or VAC rms |
| EXCITATION VOLTAGE, MAXIMUM | 15 VDC or VAC rms |
| INSULATION RESISTANCE | 5,000 MEG OHMS @ 50 VDC |
| MAXIMUM LOAD, SAFE | 150 % F.S. |
| MAXIMUM LOAD, ULTIMATE | 300 % F.S. |
| DEFLECTION AT RATED CAPACITY, APPROXIMATE | 0.003 in. |
| RADIAL DEFLECTION AT RATED CAPACITY, APPROXIMATE | 0.172° |
| CONSTRUCTION | ALLOY ALUMNINUM |

CABLE DIAMETER SHOWN IS 0.170. ALPHA or EQ. NO. 3306.
CABLE DIAMETER MAY REDUCE IN SIZE WITHOUT NOTICE.
STANDARD CABLE LENGTH IS 10 FEET.



| WIRE COLOR CODE: | Base/Stripe |
|------------------|-------------|
| + EXCITATION | Green |
| - EXCITATION | Black |
| + SIGNAL, F | White |
| - SIGNAL, F | Red |
| + SIGNAL, T | Blue |
| - SIGNAL, T | Orange |
| SHIELD | OPEN |

TOLERANCES UNLESS OTHERWISE SPECIFIED:

.XXX = ± 0.005
.XX = ± 0.015
.X = ± 0.025

SCALE: FULL

FINISH: 32 MICRO INCH OR LESS

MAT'L: ALUMINUM

HARDNESS:



Designed By: **Mettert**

Date: **11/29/00**

Title / Description:
SS1339-50LB, 160 IN-OZ.

Part No. **SS1339-50LB**

Drawn By:

Date:

FORCE, TORQUE LOAD CELL

File Name **12261SP.FCD**

Approved By:

Date:

Dwg. Size: **A**
Dwg. Type: **SPEC**

Doc. No. **12261**