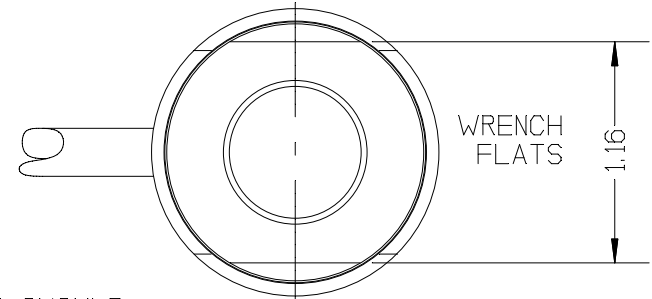


| REV | DATE | DESCRIPTION | ECO | SIGN |
|-----|------|------------------|-----|------|
| 1 | | RELEASE TO PILOT | | |

WIRE COLOR CODE:

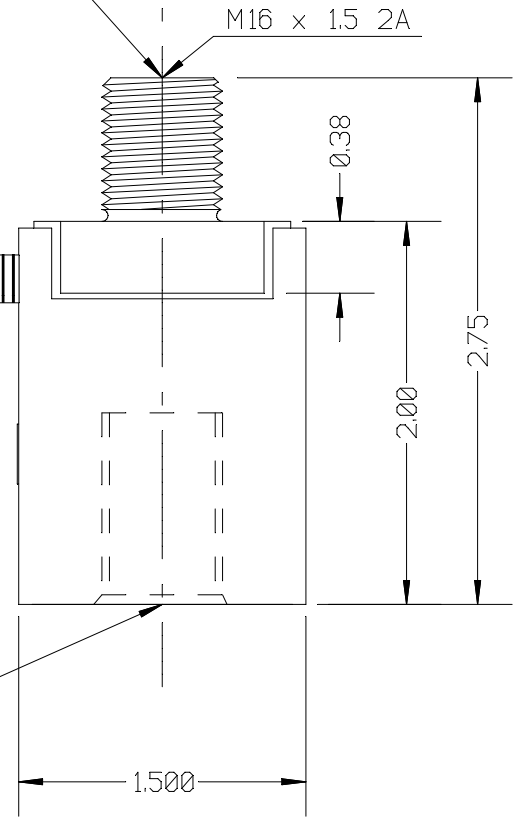
+ EXCITATION YELLOW
- EXCITATION BLACK
+ SIGNAL WHITE
- SIGNAL RED
SHIELD 1 OHM TO ELEMENT*

*(DYNAMIC LOAD CELL USED WITH T.T.I. PRODUCTION / LOAD MONITOR.)



INSTALLATION TORQUE SHOULD NOT EXCEED 250 IN-LB ON THIS END OF LOAD CELL

5 FEET STAINLESS STEEL METAL FLEX. HOSE
10 FEET OF SENSOR CABLE. TTI NO. (2048-222)
OPTIONAL LEMO 0B PLUG CONNECTOR* (NOT SHOWN)



| | |
|----------------------------------|-------------------------|
| RATED CAPACITY | 1,000 POUNDS |
| RATED OUTPUT | 2 mV/V typical |
| COMBINED ERROR | 0.25 % |
| NON-REPEATABILITY | 0.05 % |
| ZERO BALANCE | ± 1 % |
| TEMPERATURE RANGE, COMPENSATED | +14 TO 104° F |
| TEMPERATURE EFFECT, OUTPUT | 0.001 % / ° F |
| TEMPERATURE EFFECT, ZERO BALANCE | 0.05 % / ° F |
| INPUT IMPEDANCE | 350 OHMS, typical |
| EXCITATION VOLTAGE (typical) | 10 VDC or VAC rms |
| EXCITATION VOLTAGE, MAXIMUM | 15 VDC or VAC rms |
| INSULATION RESISTANCE | 5,000 MEG OHMS @ 50 VDC |
| MAXIMUM LOAD, SAFE | 200 % F.S. |
| MAXIMUM LOAD, ULTIMATE | 400 % F.S. |

M16 x 1.5 2B x 1.00 DEEP

TOOL TORQUE SHOULD NOT EXCEED 250 IN-LB ON THIS END OF LOAD CELL

TOLERANCES UNLESS OTHERWISE SPECIFIED:

XXX = ± 0.005
XX = ± 0.015
X = ± 0.025

SCALE: FULL

FINISH: FINE BRUSHED FINISH, O.D. NO MARKS
MAT'L: ALLOY STEEL / STAINLESS STEEL



Designed By: Mettert

Date: 9/10/99

Title / Description: INSERTION LOAD CELL SPECIFICATIONS

Part No. SS1295-1K

Drawn By:

Date:

File Name 11418SP.FCD

Approved By:

Date:

Dwg. Size: A
Dwg. Type: SPEC

Page 1 of 1

Doc. No. 11418