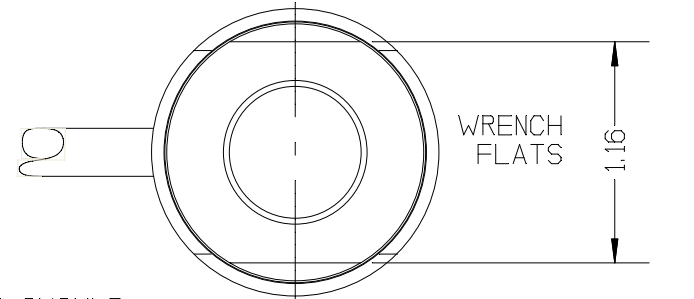


REV	DATE	DESCRIPTION	ECO	SIGN
1	3/6/98	RELEASE TO PILOT	624	RAB
2	9/23/99	CHANGE THREAD TO 3/4-16 UNC	822	RAB

WIRE COLOR CODE:

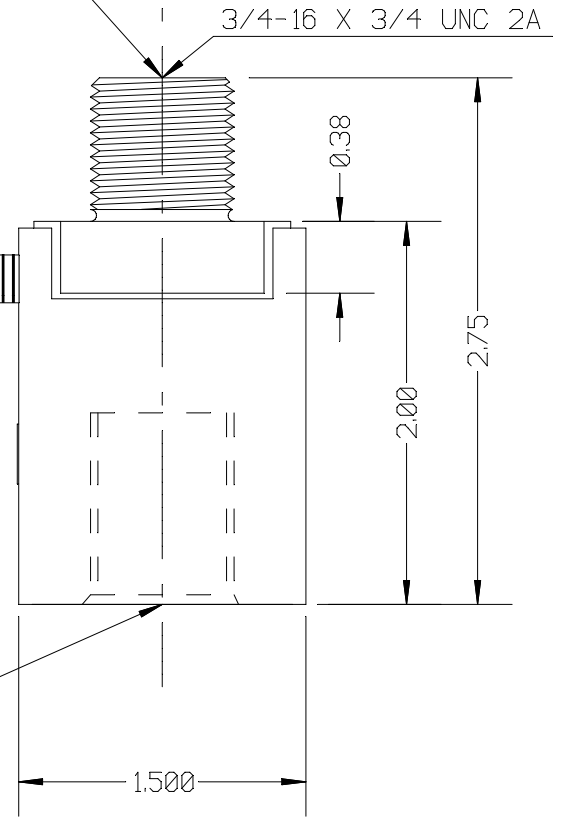
+ EXCITATION YELLOW
- EXCITATION BLACK
+ SIGNAL WHITE
- SIGNAL RED
SHIELD 1 OHM TO ELEMENT*

*(DYNAMIC LOAD CELL USED WITH T.T.I. PRODUCTION / LOAD MONITOR.)



INSTALLATION TORQUE SHOULD NOT EXCEED 250 IN-LB ON THIS END OF LOAD CELL

5 FEET STAINLESS STEEL METAL FLEX. HOSE
10 FEET OF SENSOR CABLE. TTI NO.2048-222
OPTIONAL LEMO 0B PLUG CONNECTOR*
(NOT SHOWN)



3/4-16 X 1.00 UNC 2B
TOOL TORQUE SHOULD NOT EXCEED 250 IN-LB ON THIS END OF LOAD CELL

SPECIFICATIONS:

RATED CAPACITY	1,000 POUNDS
RATED OUTPUT	2 mV/V typical
COMBINED ERROR	0.25 %
NON-REPEATABILITY	0.05 %
ZERO BALANCE	± 1 %
TEMPERATURE RANGE, COMPENSATED	+14 TO 104° F
TEMPERATURE EFFECT, OUTPUT	0.001 % / ° F
TEMPERATURE EFFECT, ZERO BALANCE	0.05 % / ° F
INPUT IMPEDANCE	350 OHMS, typical
EXCITATION VOLTAGE (typical)	10 VDC or VAC rms
EXCITATION VOLTAGE, MAXIMUM	15 VDC or VAC rms
INSULATION RESISTANCE	5,000 MEG OHMS @ 50 VDC
MAXIMUM LOAD, SAFE	200 % F.S.
MAXIMUM LOAD, ULTIMATE	400 % F.S.

TOLERANCES UNLESS OTHERWISE SPECIFIED:

XXX = ± 0.005
XX = ± 0.015
X = ± 0.025

SCALE: FULL

FINISH: FINE BRUSHED FINISH, O.D. NO MARKS
MAT'L: ALLOY STEEL / STAINLESS STEEL



TOLEDO
TRANSDUCERS,
INC.

Designed By: Mettert

Date: 3/3/98

Drawn By:

Date:

Approved By:

Date:

Title / Description:

INSERTION LOAD CELL
SPECIFICATIONS

Dwg. Size: A
Dwg. Type: SPEC

Page 1 of 1

Part No. SS1199-1K

File Name 10627SP.FCD

Doc. No. 10627