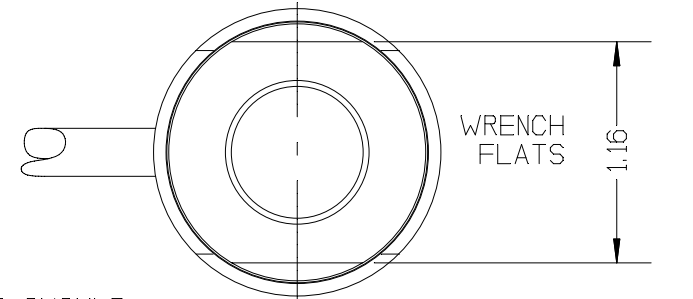


REV	DATE	DESCRIPTION	ECO	SIGN
1	9/20/99	RELEASE TO PILOT	820	RAB

WIRE COLOR CODE:

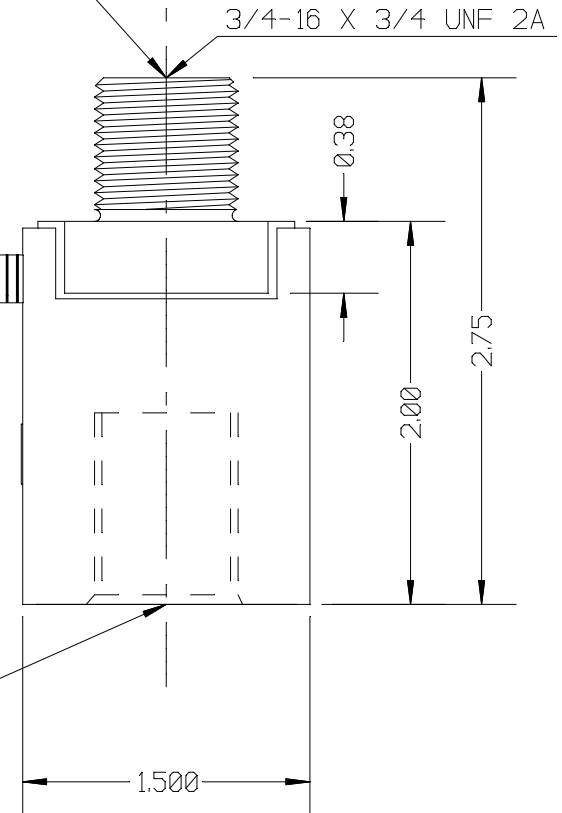
+ EXCITATION YELLOW
- EXCITATION BLACK
+ SIGNAL WHITE
- SIGNAL RED
SHIELD 1 OHM TO ELEMENT*

*(DYNAMIC LOAD CELL USED WITH T.T.I. PRODUCTION / LOAD MONITOR.)



INSTALLATION TORQUE SHOULD NOT EXCEED 3,750 IN-LB ON THIS END OF LOAD CELL

5 FEET STAINLESS STEEL METAL FLEX. HOSE
10 FEET OF SENSOR CABLE. TTI NO. (2048-222)
OPTIONAL LEMO 0B PLUG CONNECTOR (NOT SHOWN)



TOOL TORQUE SHOULD NOT EXCEED 3,750 IN-LB ON THIS END OF LOAD CELL

SPECIFICATIONS:

RATED CAPACITY	10,000 POUNDS
RATED OUTPUT	2 mV/V typical
COMBINED ERROR	0.50 %
NON-REPEATABILITY	0.05 %
ZERO BALANCE	± 1 %
TEMPERATURE RANGE, COMPENSATED	+14 TO 104° F
TEMPERATURE EFFECT, OUTPUT	0.001 % / ° F
TEMPERATURE EFFECT, ZERO BALANCE	0.05 % / ° F
INPUT IMPEDANCE	350 OHMS, typical
EXCITATION VOLTAGE (typical)	10 VDC or VAC rms
EXCITATION VOLTAGE, MAXIMUM	15 VDC or VAC rms
INSULATION RESISTANCE	5,000 MEG OHMS @ 50 VDC
MAXIMUM LOAD, SAFE	150 % F.S.
MAXIMUM LOAD, ULTIMATE	300 % F.S.

TOLERANCES UNLESS OTHERWISE SPECIFIED:

XXX = ± 0.005
XX = ± 0.015
X = ± 0.025

SCALE: FULL

FINISH: FINE BRUSHED FINISH, O.D. NO MARKS
MAT'L: ALLOY STEEL / STAINLESS STEEL



TOLEDO
TRANSDUCERS,
INC.

Designed By: Mettert

Date: 8/2/99

Drawn By:

Date:

Approved By:

Date:

Title / Description:

INSERTION LOAD CELL
SPECIFICATIONS

Dwg. Size:
A

Dwg. Type:
SPEC

Page 1 of 1

Part No. SS1199-10K

File Name 11197SP.FCD

Doc. No. 11197