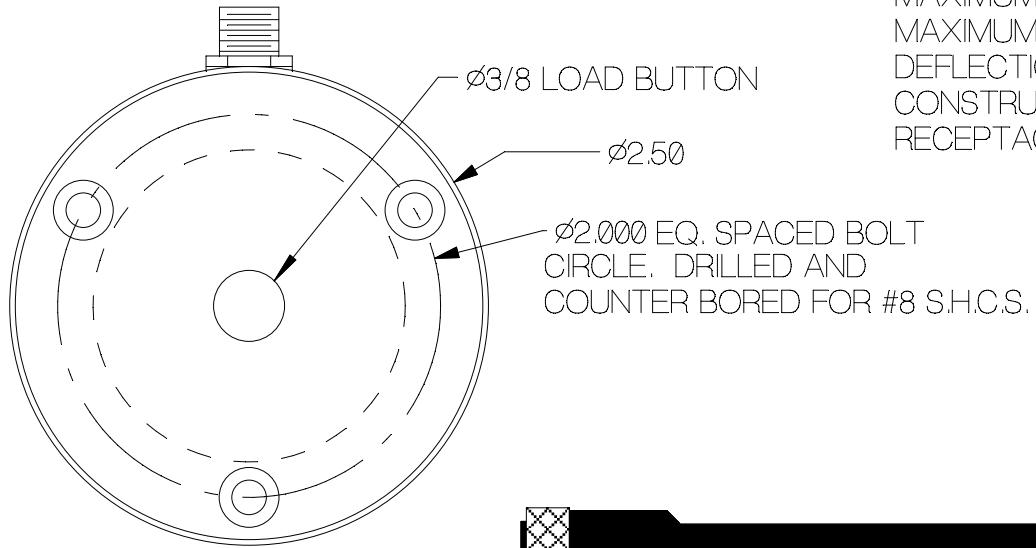
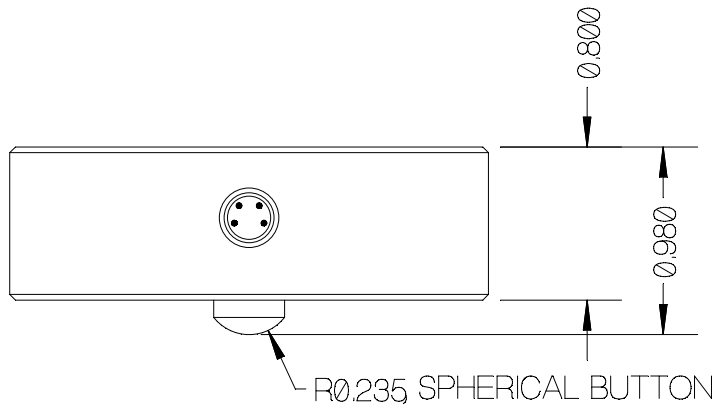


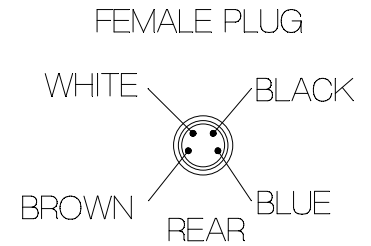
| REV | DATE | DESCRIPTION | ECO | SIGN |
|-----|------|-------------|-----|------|
| | | | | |
| | | | | |



SPECIFICATIONS:

| | |
|---|-------------------------|
| RATED CAPACITY | 25 POUNDS |
| RATED OUTPUT | 2 mV/V typical |
| COMBINED ERROR | ±0.2% / CURVE PROVIDED |
| NON-REPEATABILITY | 0.02 % |
| ZERO BALANCE | ± 10 % |
| TEMPERATURE RANGE, COMPENSATED | +60 TO 160° F |
| TEMPERATURE EFFECT, OUTPUT | 0.0015 % of Load / ° F |
| TEMPERATURE EFFECT, ZERO BALANCE | 0.0015 % of Load / ° F |
| INPUT IMPEDANCE, OUTPUT IMPEDANCE | 1,000 OHMS, typical |
| EXCITATION VOLTAGE (typical) | 10 VDC or VAC rms |
| EXCITATION VOLTAGE, MAXIMUM | 15 VDC or VAC rms |
| INSULATION RESISTANCE | 5,000 MEG OHMS @ 50 VDC |
| MAXIMUM LOAD, SAFE | 150 % F.S. |
| MAXIMUM LOAD, ULTIMATE | 200 % F.S. |
| DEFLECTION AT RATED CAPACITY, APPROXIMATE | 0.007 in. |
| CONSTRUCTION | ALLOY ALUMINUM |
| RECEPTACLE ON LOAD CELL | TURCK MFSS 4-0.2 |

| WIRE COLOR CODE: | TURCK | PIN NO. |
|------------------|-------|---------|
| +EXCITATION | BROWN | 1 |
| +SIGNAL | WHITE | 2 |
| - SIG | BLUE | 3 |
| - EXCITATION | BLACK | 4 |



TOLERANCES UNLESS OTHERWISE SPECIFIED:
 XXX = ± 0.005
 XX = ± 0.015
 X = ± 0.025

SCALE: FULL



Designed By: Mettert
 Drawn By:
 Approved By:

Date: 1/9/98
 Date:
 Date:

Title / Description:
 25 LBS LOAD CELL 2 mV/V
 SS1175M25 SPECIFICATIONS

Dwg. Size: A
 Dwg. Type: SPEC

Page 1 of 1

Part No. SS1175M25
 File Name 13789SP.FCD
 Doc. No. 13789