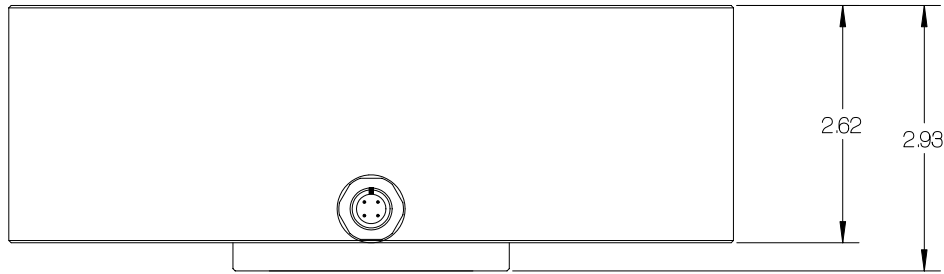


REV	DATE	DESCRIPTION	ECO	SIGN

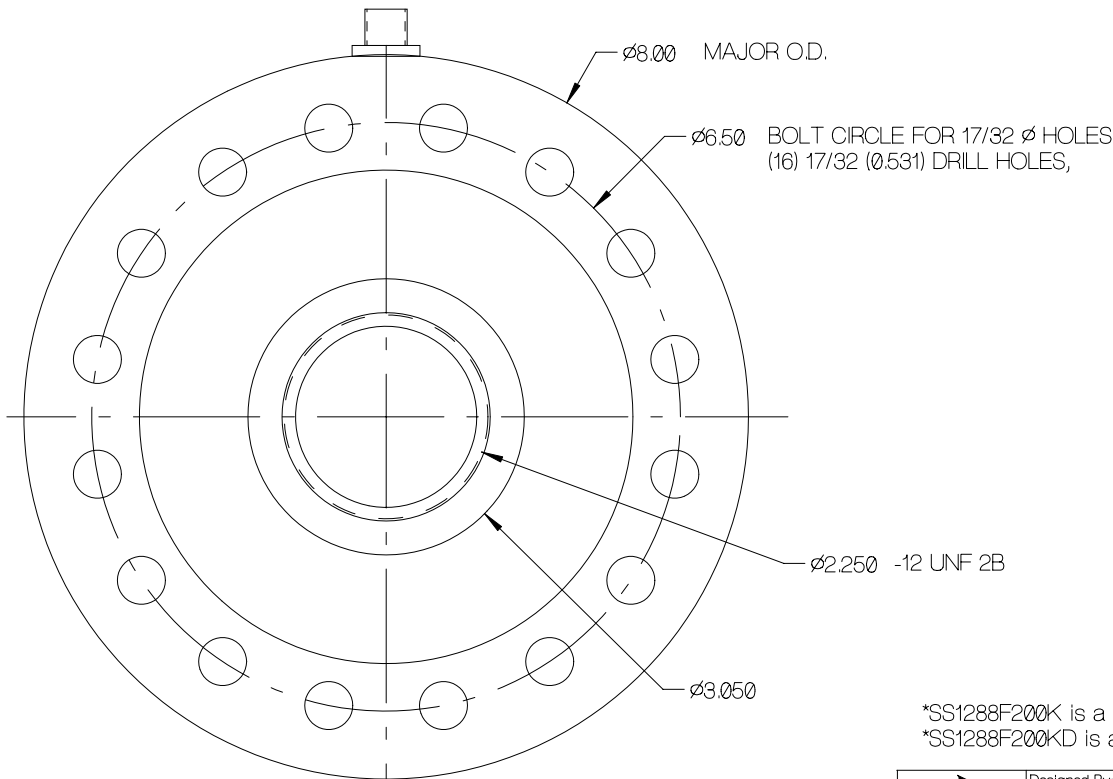


SPECIFICATIONS:

Rated Capacity, (COMPRESSION)	200,000 pounds
Rated Output, typical	2 mV/V
Combined error	0.05 % F.S.
Non-repeatability	0.01 % F.S.
Zero Balance	1 % R.O.
Temperature Range, Compensated	50 F to 120 F
Temperature Effect, Output	0.0008 % of load / F
Temperature Effects, Zero Balance	0.002 % / R.O. / F
Bridge Impedance, Typical	700 ohms
Excitation Voltage, Typical	10 VDC or VAC rms
Excitation Voltage, Maximum	15 VDC or VAC rms
Insulation Resistance	> 5,000 megohms at 50 VDC
Overload, Safe	150 % over capacity
Overload, Ultimate	200 % over capacity
Deflection at Rated Capacity, Approximate	0.005 inch
Construction	Tool Steel

Pin Cable color code:

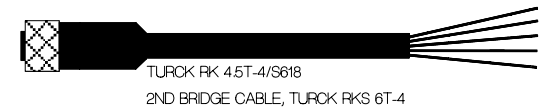
1 Brown	+ Excitation
2 White	+ Signal
3 Blue	- Signal
4 Black	- Excitation
5 Gray	2nd + Signal
6 Pink	2nd - Signal
Shield	Floats at cell



MALE PLUG OR MALE RECEPTACLE
TURCK FS 4.5/18.25
(REAR RECEPTACLE SIDE)



MALE PLUG OR MALE RECEPTACLE
TURCK FS 6/18.25
(FOR 2nd BRIDGE, REAR RECEPTACLE SIDE)



*SS1288F200K is a single bridge load cell for use in tension or compression.
*SS1288F200KD is a dual bridge load cell for use in tension or compression.

<p>TOLEDO TRANSDUCERS, INC.</p>	Designed By: Mettert	Date: 9/21/99	Title / Description: SS1288 FEMALE 200,000 Lbs CALIBRATION LOAD CELL SPECIFICATIONS	Part No. SS1288F200K, SS1288F200KD*
	Drawn By:	Date:	Dwg. Size: A	File Name
	Approved By:	Date:	Dwg. Type: SPEC	Doc. No.
	Page 1 of 1			