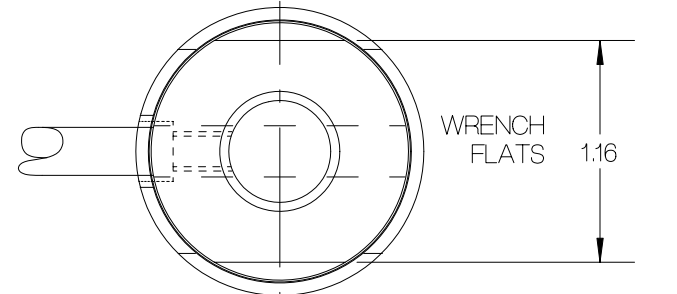


REV	DATE	DESCRIPTION	ECO	SIGN
1	11/21/96	RELEASE FOR QUOTING PURPOSES	437	RAB

WIRE COLOR CODE:

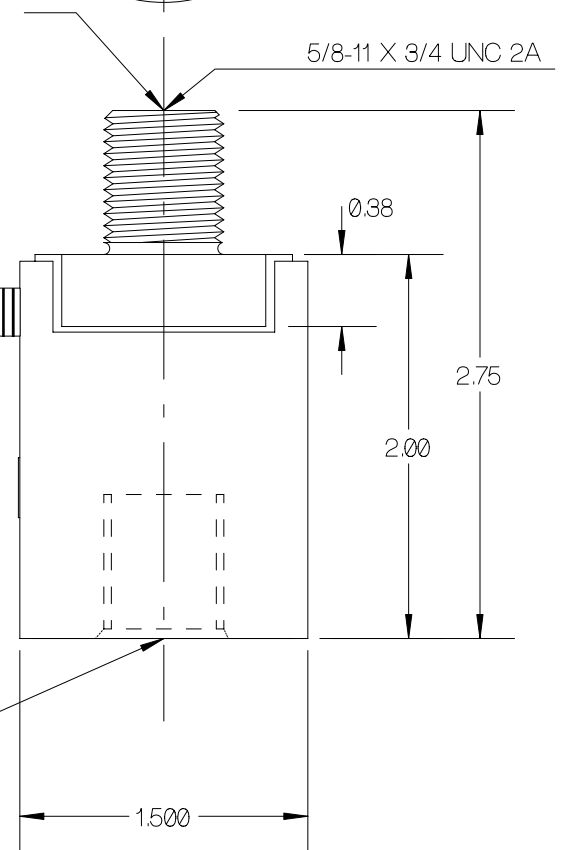
- + EXCITATION YELLOW
- EXCITATION BLACK
- + SIGNAL WHITE
- SIGNAL RED
- SHIELD 1 OHM TO ELEMENT*

*(DYNAMIC LOAD CELL USED WITH T.T.I. PRODUCTION / LOAD MONITOR.)



INSTALLATION TORQUE SHOULD NOT EXCEED 1,050 IN-LB ON THIS END OF LOAD CELL

5 FEET STAINLESS STEEL METAL FLEX. HOSE
 6 FEET OF SENSOR CABLE. TTI NO.2043
 OPTIONAL LEMO 0B PLUG CONNECTOR*
 (NOT SHOWN)



TOOL TORQUE SHOULD NOT EXCEED 1,050 IN-LB ON THIS END OF LOAD CELL

SPECIFICATIONS:

RATED CAPACITY	10,000 POUNDS
RATED OUTPUT	2 mV/V typical
COMBINED ERROR	0.25 %
NON-REPEATABILITY	0.05 %
ZERO BALANCE	± 1 %
TEMPERATURE RANGE, COMPENSATED	+14 TO 104° F
TEMPERATURE EFFECT, OUTPUT	0.014 % / ° F
TEMPERATURE EFFECT, ZERO BALANCE	0.05 % / ° F
INPUT IMPEDANCE	350 OHMS, typical
EXCITATION VOLTAGE (typical)	10 VDC or VAC rms
EXCITATION VOLTAGE, MAXIMUM	15 VDC or VAC rms
INSULATION RESISTANCE	5,000 MEG OHMS @ 50 VDC
MAXIMUM LOAD, SAFE	150 % F.S.
MAXIMUM LOAD, ULTIMATE	300 % F.S.

TOLERANCES UNLESS OTHERWISE SPECIFIED:	
.XXX = ± 0.005	SCALE: FULL
.XX = ± 0.015	
.X = ± 0.025	
FINISH: FINE BRUSHED FINISH. O.D. NO MARKS	
MATL: ALLOY STEEL / STAINLESS STEEL	



Designed By:	Mettert	Date:	11/15/96
Drawn By:		Date:	
Approved By:		Date:	

Title / Description:		Part No.
INSERTION LOAD CELL SPECIFICATIONS		
Dwg. Size:	Dwg. Type:	File Name
A	SPEC	10159SP.FCD
Page 1 of 1		Doc. No.
		10159